

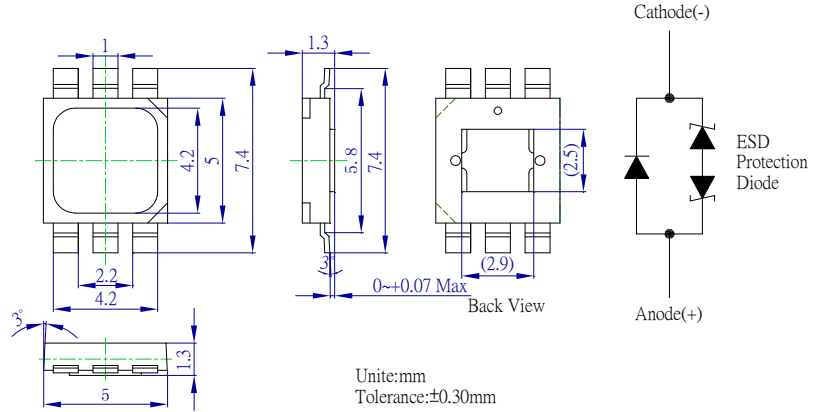
**■Features**

- Highest Luminous Flux
- Super Energy Efficiency
- Long Lifetime Operation
- Superior ESD protection
- Superior UV Resistance

**■Applications**

- Read lights (car, bus, aircraft)
- Portable (flashlight, bicycle)
- Bollards / Security / Garden
- Traffic signaling / Beacons
- In door / Out door Commercial lights
- Automotive Ext

**■Outline Dimension**



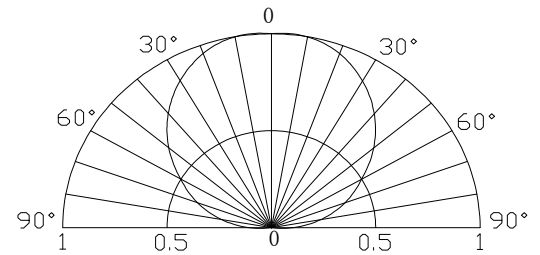
**■Absolute Maximum Rating**

(Ta=25°C)

| Item                       | Symbol          | Value      | Unit |
|----------------------------|-----------------|------------|------|
| DC Forward Current         | I <sub>F</sub>  | 800        | mA   |
| Pulse Forward Current*     | I <sub>FP</sub> | 1000       | mA   |
| Reverse Voltage            | V <sub>R</sub>  | 5          | V    |
| Power Dissipation          | P <sub>D</sub>  | 3200       | mW   |
| Operating Temperature      | Topr            | -30 ~ +85  | °C   |
| Storage Temperature        | Tstg            | -40~ +100  | °C   |
| Lead Soldering Temperature | Tsol            | 260°C/5sec | -    |

\*Pulse width Max.10ms Duty ratio max 1/10

**■Directivity**



**■Electrical -Optical Characteristics**

(Ta=25°C)

| Item                      | Symbol            | Condition             | Min. | Typ. | Max. | Unit |
|---------------------------|-------------------|-----------------------|------|------|------|------|
| DC Forward Voltage        | V <sub>F</sub>    | I <sub>F</sub> =350mA | 3.0  | 3.3  | 4.0  | V    |
|                           |                   | I <sub>F</sub> =700mA | 3.5  | 3.8  | 4.5  |      |
| DC Reverse Current        | I <sub>R</sub>    | V <sub>R</sub> =5V    | -    | -    | 10   | μA   |
| Luminous Flux             | Φ <sub>v</sub>    | I <sub>F</sub> =700mA | 180  | 200  | -    | lm   |
| Color Temperature         | CCT               | I <sub>F</sub> =700mA | -    | 6500 | -    | K    |
| Chromaticity Coordinates* | x                 | I <sub>F</sub> =700mA | -    | 0.31 | -    | -    |
|                           | y                 | I <sub>F</sub> =700mA | -    | 0.33 | -    | -    |
| 50% Power Angle           | 2θ <sub>1/2</sub> | I <sub>F</sub> =700mA | -    | 120  | -    | deg  |

\*1 Tolerance of measurements of chromaticity coordinate is ±10%

\*2 Tolerance of measurements of luminous flux is ±15%

\*3 Tolerance of measurements of forward voltage is ±0.1V

Note: Don't drive at rated current more than 5s without heat sink for Tops 3 emitter series.

**■Forward Operating Current (DC)**

