

## 3mm LED KIT

Item No.: OKLEDT31005A

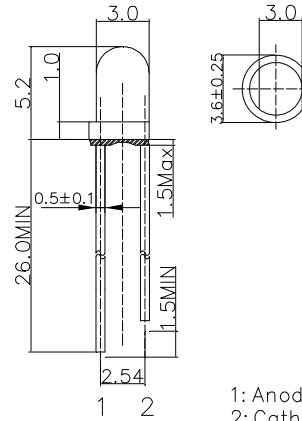


### ■ Description

- 100pcs standard 3mm LED are supplied in a storage box
- Easy to use and storage
- Widely applied to DIY projects, school science experiments, car decorations, etc.

### ■ Outline Dimension

100pcs/Box (Dimensions: 90\*6.5\*30mm)



1: Anode  
2: Cathode  
Unit: mm  
Tolerance:  $\pm 0.20$ mm  
unless otherwise noted



### ■ Features

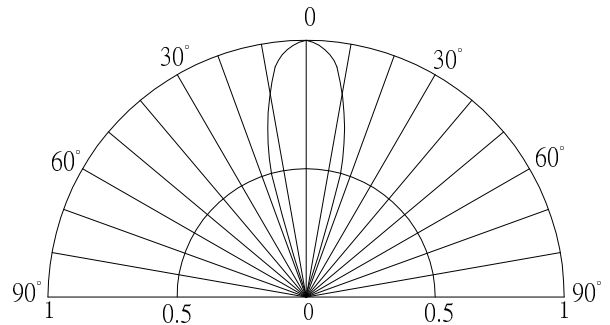
- 3mm round standard 30° directivity
- UV resistant epoxy
- Red/Yellow/Yellow Green/Blue/Warm White
- Color diffused/Water clear

### ■ Absolute Maximum Rating (Ta=25°C)

Item	Symbol	Value		Unit
		B/M	R/Y/YG	
DC Forward Current	$I_F$	30	30	mA
Pulse Forward Current#	$I_{FP}$	100	100	mA
Reverse Voltage	$V_R$	5	5	V
Power Dissipation	$P_D$	102	72	mW
Operating Temperature	$T_{opr}$	-30 ~ +85		°C
Storage Temperature	$T_{stg}$	-40 ~ +100		°C
Lead Soldering Temperature	$T_{sol}$	260°C/5sec		-

#Pulse width Max.10ms Duty ratio max 1/10

### ■ Directivity



### ■ Electrical -Optical Characteristics (Ta=25°C)

3mm LED					
LED P/N	OSR63134A	OSY53134A	OSG83134A	OSB53134A	OSM53131A
Light Color	Red	Yellow	Yellow Green	Blue	Warm White
Lens Color	Red Diffused	Yellow Diffused	Green Diffused	Blue Diffused	Water Clear
Wavelength*1/Color Temperature*2	620-640nm	585-595nm	565-575nm	462.5-472.5nm	2700-3300K
Luminous Intensity(typ.)*3	330mcd	420mcd	55mcd	2500mcd	14400mcd
Forward Voltage*4	1.8-2.4V	1.8-2.4V	1.8-2.4V	2.7-3.4V	2.7-3.4V
Forward Current	20mA	20mA	20mA	20mA	20mA
Viewing Angle(typ.)	30°	30°	30°	30°	30°
Quantity(pcs)/Box	20	20	20	20	20

\*1 Tolerance of measurements of dominant wavelength is  $\pm 1$ nm

\*2 Tolerance of measurements of color temperature is  $\pm 10\%$

\*3 Tolerance of measurements of luminous intensity is  $\pm 15\%$

\*4 Tolerance of measurements of forward voltage is  $\pm 0.1$ V