

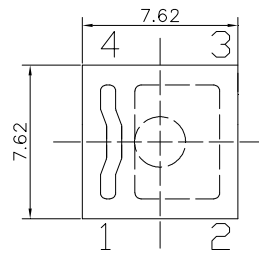
■Features

- High Luminous Super Flux Output
- UV Resistant Epoxy
- Long Lifetime Operation
- Water Clear Type

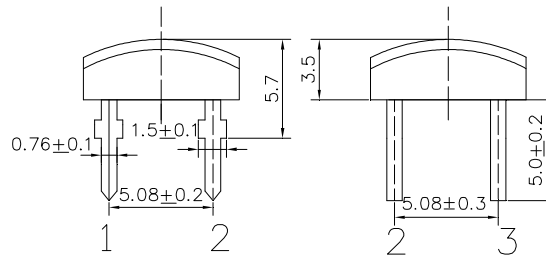
■Applications

- Electronic Signs And Signals
- Small Area Illuminations
- Back Lighting
- Other Lighting

■Outline Dimension



Unit: mm
Tolerance: $\pm 0.20\text{mm}$
unless otherwise noted
1,4 Anode
2,3 Cathode



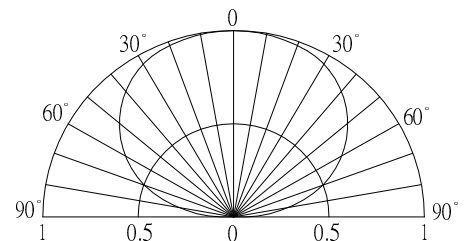
■Absolute Maximum Rating

($T_a=25^\circ\text{C}$)

| Item | Symbol | Value | Unit |
|----------------------------|-----------|----------------------------|------------------|
| DC Forward Current | I_F | 30 | mA |
| Pulse Forward Current# | I_{FP} | 100 | mA |
| Reverse Voltage | V_R | 15 | V |
| Power Dissipation | P_D | 234 | mW |
| Operating Temperature | T_{opr} | -30 ~ +85 | $^\circ\text{C}$ |
| Storage Temperature | T_{stg} | -40 ~ +100 | $^\circ\text{C}$ |
| Lead Soldering Temperature | T_{sol} | 260 $^\circ\text{C}$ /5sec | - |

#Pulse width Max.10ms Duty ratio max 1/10

■Directivity



■Electrical -Optical Characteristics

($T_a=25^\circ\text{C}$)

| Item | Symbol | Condition | Min. | Typ. | Max. | Unit |
|----------------------|-----------------|-------------------|------|------|------|---------------|
| DC Forward Voltage*1 | V_F | $I_F=20\text{mA}$ | - | 6.3 | 7.8 | V |
| DC Reverse Current | I_R | $V_R=15\text{V}$ | - | - | 10 | μA |
| Domi. Wavelength*2 | λ_D | $I_F=20\text{mA}$ | 620 | 625 | 630 | nm |
| Luminous Intensity*3 | I_v | $I_F=20\text{mA}$ | 2500 | 3500 | - | mcd |
| 50% Power Angle | $2\theta_{1/2}$ | $I_F=20\text{mA}$ | - | 140 | - | deg |

*1 Tolerance of measurements of forward voltage is $\pm 0.1\text{V}$

*2 Tolerance of measurements of dominant wavelength is $\pm 1\text{nm}$

*3 Tolerance of measurements of luminous intensity is $\pm 15\%$