

## E10 DC Screw LED Lamp

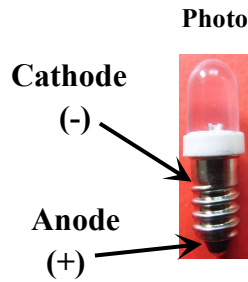
E10 DC Screw LED Lamp is LED which requires a resistor in series to permit direct connection to DC 4.5V.

### ■ Features

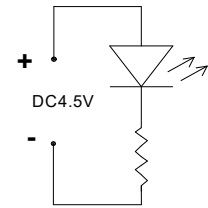
- High Luminous LEDs
- 8mm Round LED
- Color Transparent
- DC 4.5V

### ■ Applications

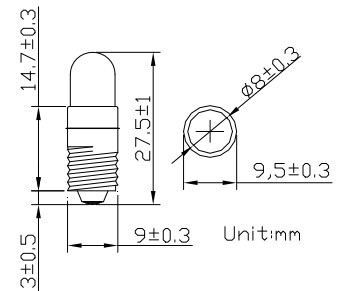
- Bicycle Light / Torch
- Dashboard Signal / Automotive Lighting



### Circuit Diagram



### Outline Dimension

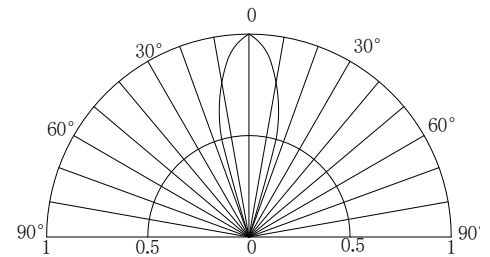


### ■ Absolute Maximum Rating

(Ta=25°C)

Item	Symbol	Value	Unit
DC Forward Voltage	V <sub>F</sub>	5.5	V
DC Forward Current	I <sub>F</sub>	30	mA
Power Dissipation	P <sub>D</sub>	0.165	W
Operating Temperature	Topr	-30 ~ +85	°C
Storage Temperature	Tstg	-40 ~ +100	°C
Lead Soldering Temperature	Tsol	260°C/5sec	-

### ■ Directivity



### ■ Electrical -Optical Characteristics

(Ta=25°C)

Part Number	Emitting Color		Lens Type	Control Voltage DC (V)*			Wd(nm)/CCT(K)*			Luminous Intensity* (mcd)		
				Min.	Typ.	Max.	Working Current: IF=20mA			Min.	Typ.	Max.
							Min.	Typ.	Max.			
OPDB-W54K8B31B	Cool White		Water Clear	-	4.5	5.5	CCT:8500-18000K			20000	25000	-
OPDB-W44K8B31B	Pure White		Water Clear				CCT:5500-8500K			20000	25000	-
OPDB-M54K8B31B	Warm White	■	Water Clear				CT:2700-3300K			20000	25000	-
OPDB-B5DA8B33B	Blue	■	Blue Transparent				465	470	475	10000	12000	-
OPDB-G58A8B33B	Green	■	Green Transparent				520	525	530	20000	25000	-
OPDB-Y5PA8B33B	Yellow	■	Yellow Transparent				585	590	595	12000	14400	-
OPDB-O5PA8B33B	Orange	■	Orange Transparent				600	605	610	12000	14400	-
OPDB-R5PA8B33B	Red	■	Red Transparent				620	625	630	12000	14400	-

\*1 Tolerance of measurements of luminous intensity is +15%

\*2 Tolerance of measurements of forward voltage is ±0.1V

\*3 Tolerance of measurements of dominant wavelength is ±1nm

\*4 Tolerance of measurements of color temperature is ±10%

LED & Application Technologies

