

■ **Features**

- 1.25 Inch 5x7 Dot Matrix
- Long lifetime operation
- IC compatible
- Low power dissipation
- Black surface & white dot

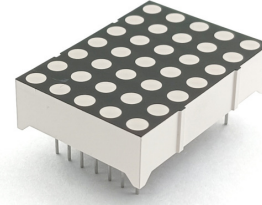
■ **Applications**

- Counting device
- Clock

■ **Absolute Maximum Rating** (Ta=25°C)

Item	Symbol	Value		Unit
		YG/Y/O/R/RA	W/B/G	
DC Forward Current	I _F	25	25	mA
Pulse Forward Current#	I _{FP}	100	100	mA
Reverse Voltage	V _R	5	5	V
Power Dissipation	P _t	62.5	90	mW
Operating Temperature	Topr	-30 ~ +70		°C
Storage Temperature	Tstg	-40~ +85		°C
Lead Soldering Temperature(1.6mm from seating plane)	Tsol	260°C/5sec		°C

■ **Photo**



#Pulse width Max.10ms Duty ratio max 1/10

■ **Electrical -Optical Characteristics** (Ta=25°C)

Part Number	Color		V _F (V)			I _R (μA)	I _v (mcd)			λD(nm)		
			Min.	Typ.	Max.		Max.	Min.	Typ.	Max.	Min.	Typ.
			I _F =20mA			V _R =5V			I _F =20mA			
OSL351251-AW(BW)	White	W	-	3.3	3.6	20	-	65	-	X:0.27 Y:0.28		
OSL351251-AB(BB)	Blue	B	-	3.3	3.6	20	-	50	-	460	465	475
OSL351251-AG(BG)	Pure Green	G	-	3.3	3.6	20	-	270	-	515	525	530
OSL351251-AYG(BYG)	Yellow Green	YG	-	2.2	2.6	20	-	12	-	565	570	575
OSL351251-AY(BY)	Yellow	Y	-	2.1	2.5	20	-	60	-	585	590	595
OSL351251-AO(BO)	Orange	O	-	2.1	2.5	20	-	70	-	600	605	610
OSL351251-AR(BR)	Red	R	-	2.1	2.5	20	-	20	-	625	630	640
OSL351251-ARA(BRA)	High Luminance Red	RA	-	2.1	2.5	20	-	100	-	620	625	630

*1 Tolerance of measurements of chromaticity coordinate is ±10%

*2 Tolerance of measurements of dominant wavelength is ±1nm

*3 Tolerance of measurements of luminous intensity is ±15%

*4 Tolerance of measurements of forward voltage is±0.1V

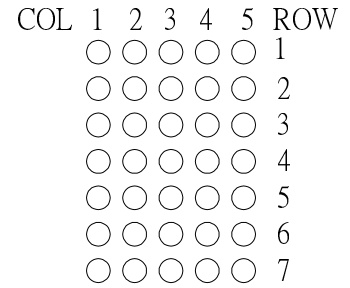
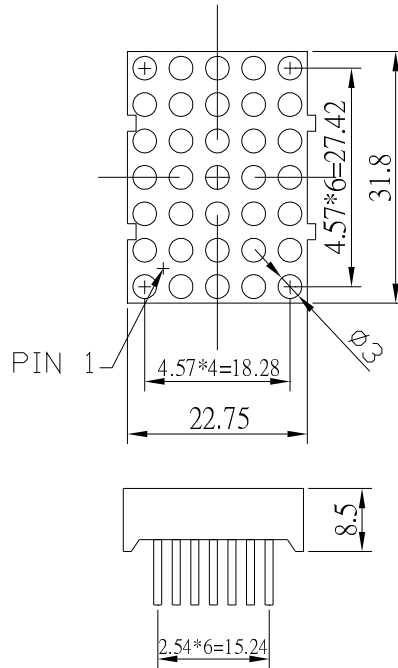
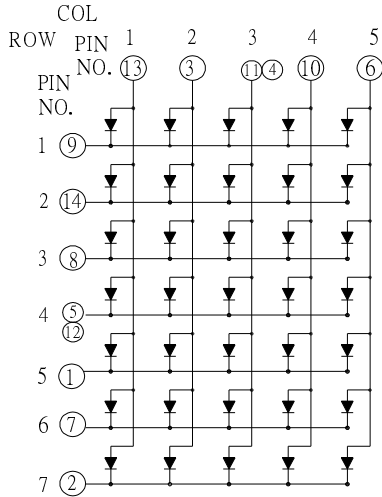
■ **Package Dimensions and Pin Function**

OSL351251-AX

Note:

1, Unit : mm (Tolerance: ±0.25mm unless otherwise noted)

2, The slope angle of any PIN may be ±5.0° Max



OSL351251-BX

Note:

1, Unit : mm (Tolerance: ±0.25mm unless re otherwise noted)

2, The slope angle of any PIN may be ±5.0° Max

