

■ **Features**

- 53.7\*29.6mm arrow LED display
- Long lifetime operation
- IC compatible
- Low power consumption
- Black surface & white segment or dot
- Number of pins: 10

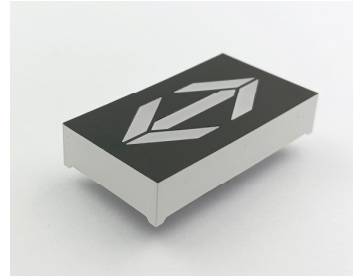
■ **Applications**

- Direction indicator
- Instrumentation and control

■ **Absolute Maximum Rating** (Ta=25°C)








Item	Symbol	Value		Unit
		YG/Y/O/R	W/B/PG	
DC Forward Current	I <sub>F</sub>	20	20	mA
Pulse Forward Current#	I <sub>FP</sub>	100	100	mA
Reverse Voltage	V <sub>R</sub>	10	10	V
Power Dissipation	P <sub>t</sub>	96	136	mW
Operating Temperature	Topr	-30 ~ +70		°C
Storage Temperature	Tstg	-40~ +85		°C
Lead Soldering Temperature(1.6mm from seating plane)	Tsol	260°C/5sec		°C

■ **Photo**



#Pulse width Max.10ms Duty ratio max 1/10

■ **Electrical -Optical Characteristics** (Ta=25°C)

Part Number	Color			V <sub>F</sub> (V)			I <sub>R</sub> (μA)	I <sub>v</sub> (mcd)			λD(nm)		
				Min.	Typ.	Max.	Max.	Min.	Typ.	Max.	Min.	Typ.	Max.
				I <sub>F</sub> =20mA			V <sub>R</sub> =10V			I <sub>F</sub> =20mA			
OSL54301-IW/LW	White	W		-	6	6.8	10	-	80	-	X=0.27,Y=0.28 (CCT:8000-18000K)		
OSL54301-IB/LB	Blue	B		-	6	6.8	10	-	50	-	460	465	475
OSL54301-IG/LG	Pure Green	PG		-	6	6.8	10	-	200	-	515	525	530
OSL54301-IYG/LYG	Yellow Green	YG		-	4	4.8	10	-	12	-	565	570	575
OSL54301-IY/LY	Yellow	Y		-	4	4.8	10	-	60	-	585	590	595
OSL54301-IO/LO	Orange	O		-	4	4.8	10	-	70	-	600	605	610
OSL54301-IR/LR	Red	R		-	4	4.8	10	-	26	-	625	630	640
OSL54301-IRA/LRA	High Luminance Red	RA		-	4	4.8	10	-	100	-	620	625	630

\*1 Tolerance of measurements of color temperature is ±10%

\*2 Tolerance of measurements of dominant wavelength is ±1nm

\*3 Tolerance of measurements of luminous intensity is ±15%

\*4 Tolerance of measurements of forward voltage is±0.1V

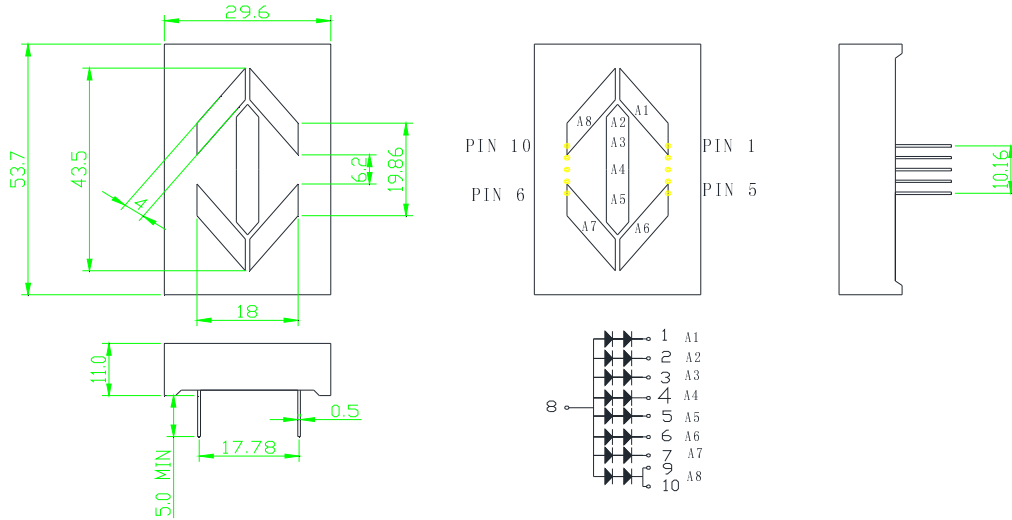
■ Package Dimensions and Pin Function

**OSL54301-IX**

**(Common Anode type)**

Note:

Unit : mm (Tolerance:±0.25mm unless otherwise noted)



**OSL54301-LX**

**(Common Cathode type)**

Note:

Unit : mm (Tolerance:±0.25mm unless otherwise noted)

