

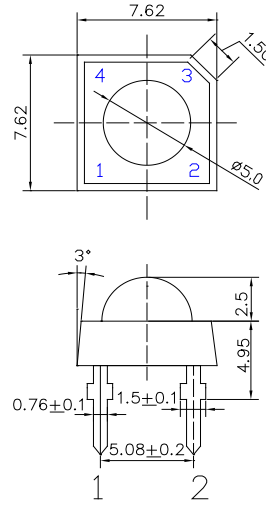
**■ Features**

- High Luminous Super Flux Output
- 5 ° Standard Directivity
- Long Lifetime Operation
- Low Thermal Resistance
- UV Resistant Epoxy
- Water Clear Type

**■ Applications**

- Electronic Signs and Signals
- Illuminations
- Reading Lamps / Emergency Lighting
- Other Lighting

**■ Outline Dimension**



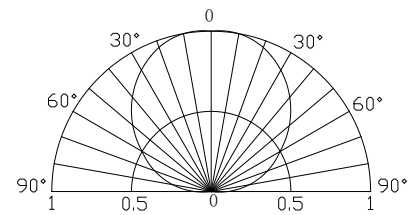
Unit: mm  
Tolerance:  $\pm 0.20\text{mm}$   
unless otherwise noted  
1,4 Anode  
2,3 Cathode

**■ Absolute Maximum Rating**

( $T_a=25^\circ\text{C}$ )

Item	Symbol	Value	Unit
DC Forward Current	$I_F$	180	mA
Pulse Forward Current#	$I_{FP}$	200	mA
Reverse Voltage	$V_R$	5	V
Power Dissipation	$P_D$	648	mW
Operating Temperature	$T_{opr}$	-30 ~ +85	$^\circ\text{C}$
Storage Temperature	$T_{stg}$	-40 ~ +100	$^\circ\text{C}$
Lead Soldering Temperature	$T_{sol}$	260 $^\circ\text{C}$ /5sec	-

**■ Directivity**



#Pulse width Max 10ms , Duty ratio max 1/10

**■ Electrical -Optical Characteristics**

( $T_a=25^\circ\text{C}$ )

Part Number	Color			$V_F$ (V)*1			$I_R$ ( $\mu\text{A}$ )	$\Phi_V$ (LM)*2			$I_v$ (mcd)*3			$WD$ (nm)*4/CCT(K)*5			$2\theta_{1/2}$ (deg)
				Min.	Typ.	Max.	Max.	Min.	Typ.	Max.	Min.	Typ.	Max.	Min.	Typ.	Max.	Typ.
				$I_F=150\text{mA}$			$V_R=5\text{V}$	$I_F=150\text{mA}$									
OSW5XAZ2C1P	Cool White	W		-	3.2	3.6	10	35	40	-	25000	30000	-	8500-10000-18000K(X:0.27,Y:0.28)			120
OSW4XAZ2C1P	Pure White	W		-	3.2	3.6	10	35	40	-	25000	30000	-	5500-6500-8500K(X:0.31,Y:0.34)			120
OSM5XAZ2C1P	Warm White	M	■	-	3.2	3.6	10	33	38	-	22000	25000	-	2700-3000-3200K(X:0.44,Y:0.41)			120
OSB4XAZ2C1P	Blue	B	■	-	3.2	3.6	10	10	12	-	10000	12000	-	455	460	470	120
OSG5XAZ2C1P	Pure Green	PG	■	-	3.2	3.6	10	33	38	-	22000	25000	-	517	525	530	120

\*1 Tolerance of measurements of forward voltage is  $\pm 0.1\text{V}$

\*2 Tolerance of measurements of luminous flux is  $\pm 15\%$

\*3 Tolerance of measurements of luminous intensity is  $\pm 15\%$

\*4 Tolerance of measurements of dominant wavelength is  $\pm 10\%$

\*5 Tolerance of measurements of color temperature is  $\pm 10\%$