

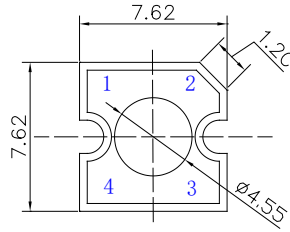
■Features

- High Luminous Super Flux Output
- 4.55φ Standard Directivity
- Long Lifetime Operation
- Water Clear Type

■Applications

- Electronic Signs and Signals
- Illuminations
- Reading Lamps / Emergency Lighting
- Other Lighting

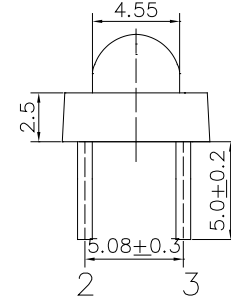
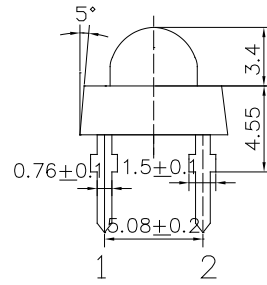
■Outline Dimension



1,4 → 2,3 W/M/B/PG

1,4 ← 2,3 Y/R

Unit: mm
Tolerance: $\pm 0.20\text{mm}$
unless otherwise noted

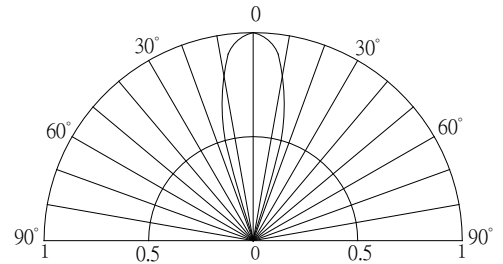


■Absolute Maximum Rating

($T_a=25^\circ\text{C}$)

Item	Symbol	Value		Unit
		W/M/B/PG	Y/R	
DC Forward Current	I_F	180	180	mA
Pulse Forward Current#	I_{FP}	250	250	mA
Reverse Voltage	V_R	5	5	V
Power Dissipation	P_D	648	504	mW
Operating Temperature	T_{opr}	-30 ~ +85		$^\circ\text{C}$
Storage Temperature	T_{stg}	-40 ~ +100		$^\circ\text{C}$
Lead Soldering Temperature	T_{sol}	260 $^\circ\text{C}/5\text{sec}$		-

■Directivity



#Pulse width Max 10ms , Duty ratio max 1/10

■Electrical -Optical Characteristics

($T_a=25^\circ\text{C}$)

Part Number	Color		V_F (V)*			I_R (μA)	Φ_V (LM)*			WD (nm)*/ CCT (K)*			2θ 1/2(deg)	
			Min.	Typ.	Max.	Max.	Min.	Typ.	Max.	Min.	Typ.	Max.	Typ.	
			$I_F=150\text{mA}$			$V_R=5\text{V}$	$I_F=150\text{mA}$							
OSW5XAZE31G	Cool White	W	-	3.2	3.6	10	35	40	-	8500-10000-18000K(X:0.27,Y:0.28)			30	
OSW4XAZE31G	Pure White	W	-	3.2	3.6	10	35	40	-	5500-6500-8500K(X:0.31,Y:0.34)			30	
OSM5XAZE31G	Warm White	M	■	-	3.2	3.6	10	33	38	-	2700-3000-3200K(X:0.44,Y:0.41)			30
OSB4XAZE31G	Blue	B	■	-	3.2	3.6	10	10	12	-	455	460	470	30
OSG5XAZE31G	Pure Green	PG	■	-	3.2	3.6	10	33	38	-	517	525	530	30
OS5YXAZE31G	Yellow	Y	■	-	2.2	2.8	10	18	23	-	585	590	595	30
OS5RXAZE31G	Red	R	■	-	2.2	2.8	10	18	23	-	620	625	630	30

*1 Tolerance of measurements of forward voltage is $\pm 0.1\text{V}$

*2 Tolerance of measurements of luminous flux is $\pm 15\%$

*3 Tolerance of measurements of dominant wavelength is $\pm 10\%$

*4 Tolerance of measurements of color temperature is $\pm 10\%$