

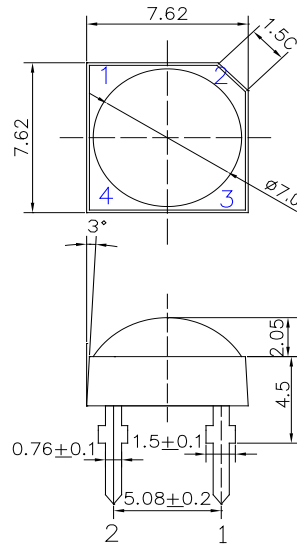
■Features

- High Luminous Super Flux Output
- 7φ Standard Directivity
- Long Lifetime Operation
- Water Clear Type

■Applications

- Electronic Signs and Signals
- Illuminations
- Reading Lamps / Emergency Lighting
- Other Lighting

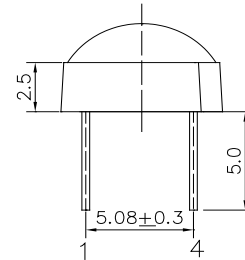
■Outline Dimension



1,4 → 2,3 W/M/B/PG

1,4 → 2,3 Y/R

Unit: mm
Tolerance: ±0.20mm
unless otherwise noted

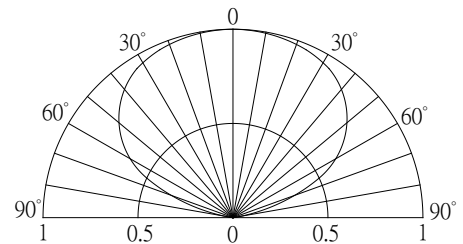


■Absolute Maximum Rating

(Ta=25°C)

Item	Symbol	Value		Unit
		W/M/B/PG	Y/R	
DC Forward Current	I _F	180	180	mA
Pulse Forward Current#	I _{FP}	250	250	mA
Reverse Voltage	V _R	5	5	V
Power Dissipation	P _D	648	504	mW
Operating Temperature	Topr	-30 ~ +85		°C
Storage Temperature	Tstg	-40 ~ +100		°C
Lead Soldering Temperature	Tsol	260°C/5sec		-

■Directivity



#Pulse width Max 10ms , Duty ratio max 1/10

■Electrical -Optical Characteristics

(Ta=25°C)

Part Number	Color			V _F (V)*			I _R (μA)	Φ _v (LM)*			WD(nm)*/CCT(K)*			2θ1/2(deg)
				Min.	Typ.	Max.	Max.	Min.	Typ.	Max.	Min.	Typ.	Max.	Typ.
				I _F =150mA			V _R =5V			I _F =150mA				
OSW5XAZ5D1G	Cool White	W		-	3.2	3.6	10	35	40	-	8500-10000-18000K(X:0.27,Y:0.28)			130
OSW4XAZ5D1G	Pure White	W		-	3.2	3.6	10	35	40	-	5500-6500-8500K(X:0.31,Y:0.34)			130
OSM5XAZ5D1G	Warm White	M	■	-	3.2	3.6	10	33	38	-	2700-3000-3200K(X:0.44,Y:0.41)			130
OSB4XAZ5D1G	Blue	B	■	-	3.2	3.6	10	10	12	-	455	460	470	130
OSG5XAZ5D1G	Pure Green	PG	■	-	3.2	3.6	10	33	38	-	517	525	530	130
OS5YXAZ5D1G	Yellow	Y	■	-	2.2	2.8	10	18	23	-	585	590	595	130
OS5RXAZ5D1G	Red	R	■	-	2.2	2.8	10	18	23	-	620	625	630	130

*1 Tolerance of measurements of forward voltage is ±0.1V

*2 Tolerance of measurements of luminous flux is ±15%

*3 Tolerance of measurements of dominant wavelength is ±10%

*4 Tolerance of measurements of color temperature is ±10%